

FOR THE GLORY OF GOD

Valley of Our Lady Monastery

Choir stalls

The stalls will be constructed of quarter sawn red oak and include a folding seat, side wings to provide individual enclosure and a curved sound board above to reflect voices into the center aisle. The sound board will include a built-in reading light to allow illumination without lighting the entire choir. A free-standing forma, that includes two book shelves, will sit in front of each stall.

\$160,000 (\$82,000 already raised, \$78,000 remaining)

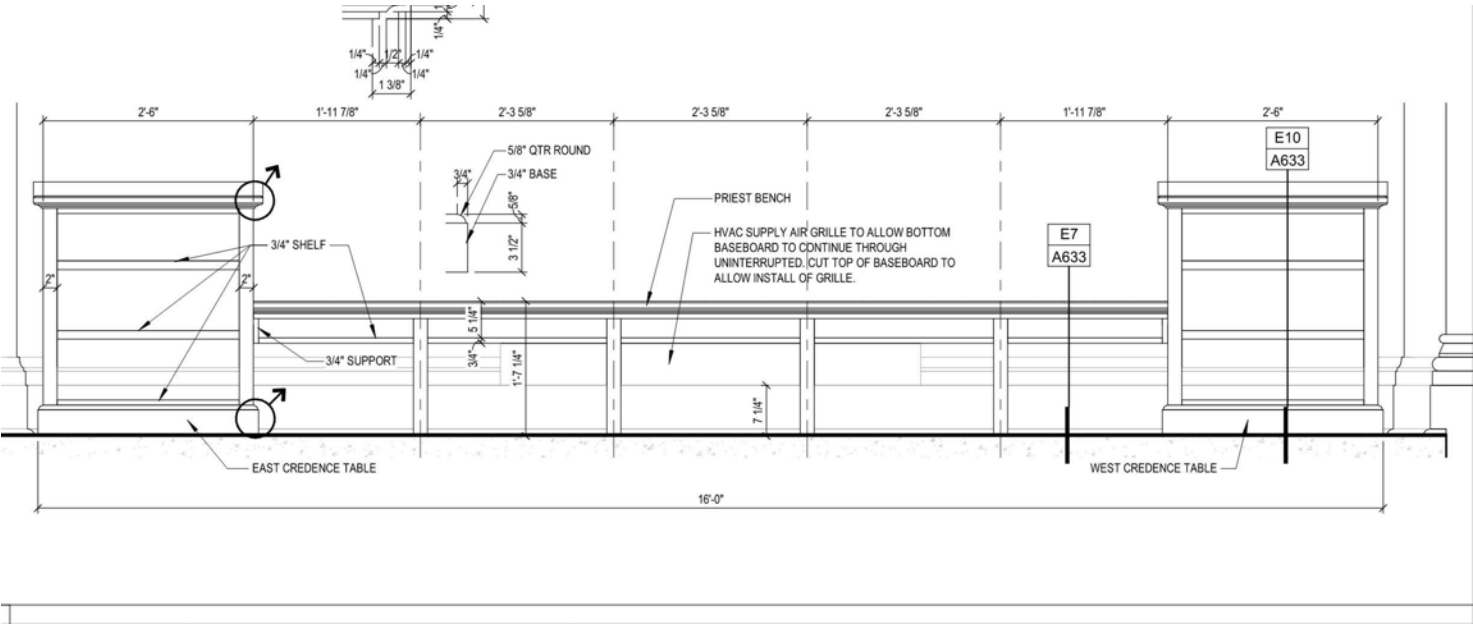


Two Credence Tables

These tables will be built into the presider bench and will sit along the south wall of the sanctuary. White oak will be used for all sanctuary furnishings to tie all furnishings to use a similar materials, details and finishes. \$3,450 each for total of \$6,900.

Presider's Chair/Bench

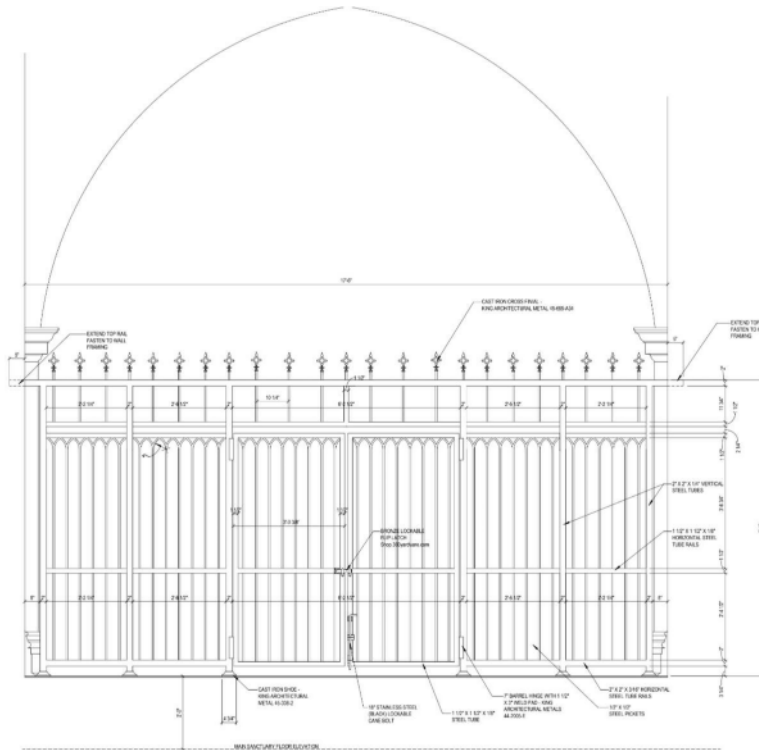
The south wall of the sanctuary will have a long bench for the presider and servers. Each end of the bench includes credence tables to store and stage elements for Mass. Traditional White Oak will be used to construct the bench. \$3,900



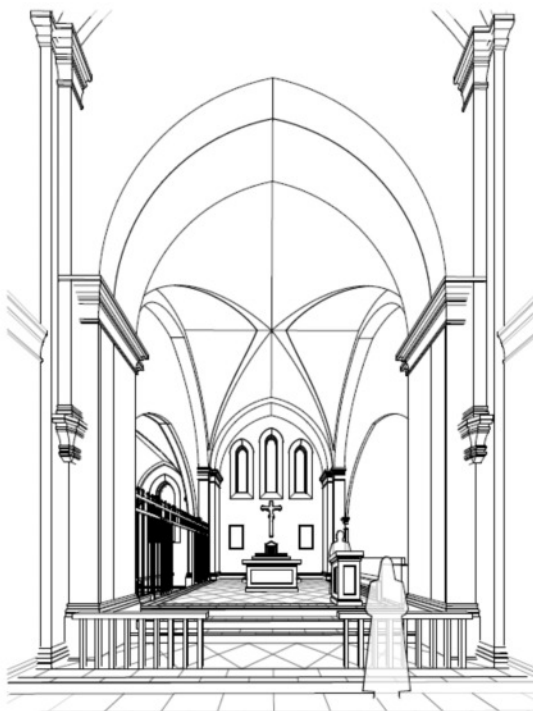
Grilles, Gates, Communion Rails

These new steal grilles and rails will provide security to the sisters and allow guest views into the sanctuary. The design is simple but has cast wrought iron details. The gates will be finished in a dark bronze color to match the window framing color.

\$60,000



Valley of Our Lady



CA Presentation_Groin Vault and Apoe Straight View

A black and white line drawing of a church interior, viewed from the entrance looking down the nave. The drawing shows the central aisle, pews on either side, a pulpit, a cross on the wall, and three arched windows at the far end. The drawing is a technical sketch, showing structural elements like columns, arches, and the floor tiles.

D	<div>D1</div> <div>PLAN VIEW</div> <div>SCALE: 3/4" = 1'-0"</div> <div>LECTERN</div>	<div>D3</div> <div>ELEVATION DETAIL</div> <div>SCALE: 3/4" = 1'-0"</div> <div>CHURCH FORM - VIEW FROM STAIRS</div>
C		
B		
A		<div>4'-8 3/4"</div>

Pews: For Guest Nave, Prayer Loft, 1st and 2nd floor Corridors, and Chapter Room

These pews have been rescued from the Motherhouse of the Dominican Sisters of Sinsinawa. Lengths and the finish have been modified to fit within the New Monastery spaces.
\$56,480.

